

Specifications

Sheet pile press 4080

Push force	4 x 800 kN	4 x 90 tons
Pull force	4 x 700 kN	4 x 79 tons
Stroke of cylinders	400 mm	15.75 in
Width of steel sheet pile Z-form	580-630 mm	22.83-24.80 in
Width/Height of steel sheet pile U-form	500-600/370-452 mm	19.69-23.62/14.57-17.80 in
Working pressure	max. 350 bar	max. 5076 psi
Weight approx.	7000 kg	15450 lbs

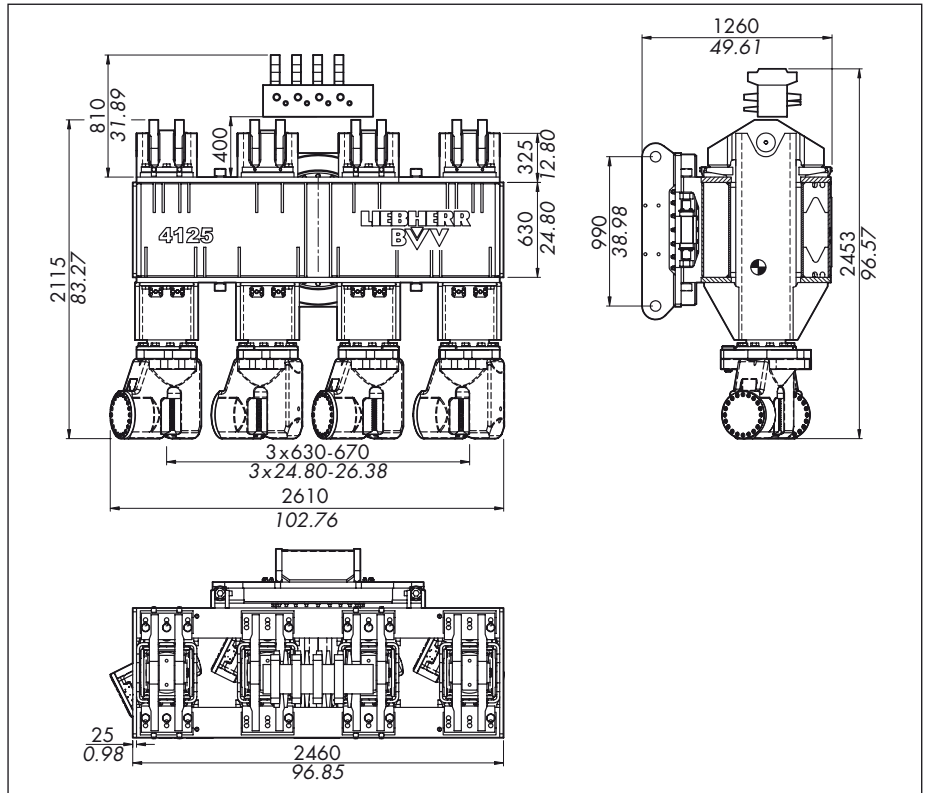
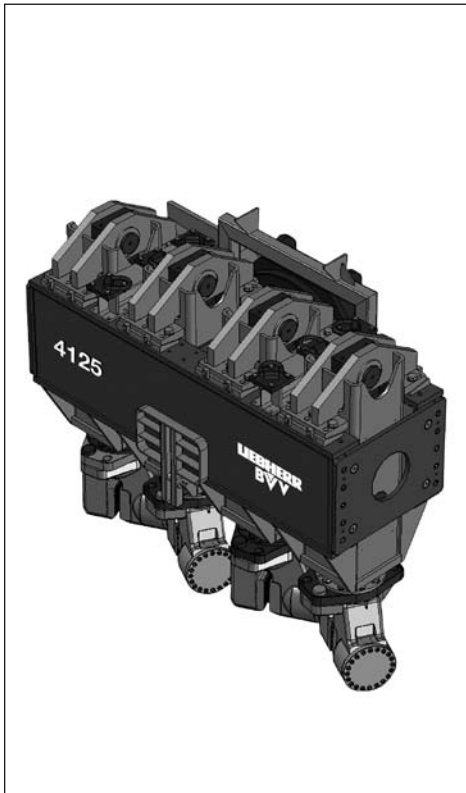
Special features

- Designed for lead mounted operation onto Liebherr LRB-Series
- Pressing unit can be applied to all available single steel sheet piles (U-type and Z-type)
- Automatic and manual operation
- Safe operation due to torque monitoring
- Weight of the machine as well as the skin friction of the idle sheet piles are utilized for the pressing process

Basic machine

	LRB 125	LRB 125XL	LRB 155	LRB 255
4080	x	x	x	x
4125				x

All dimensions in **mm/inch**; only metric values are valid.



Specifications

Sheet pile press 4125

Push force	4 x 1250 kN	4 x 140 tons
Pull force	4 x 1000 kN	4 x 112 tons
Stroke of cylinders	400 mm	15.75 in
Width of steel sheet pile Z-form	630-670 mm	24.80-26.38 in
Height of steel sheet pile U-form	on request	
Working pressure	max. 350 bar	max. 5076 psi
Weight approx.	9500 kg	20950 lbs

Special features

- Designed for lead mounted operation onto Liebherr LRB-Series
- Pressing unit can be applied to all available single Z-type sheet piles (and U-types by use of a different frame)
- Automatic and manual operation
- Safe operation due to torque monitoring
- Weight of the machine as well as the skin friction of the idle sheet piles are utilized for the pressing process

Basic machine

	LRB 125	LRB 125XL	LRB 155	LRB 255
4080	x	x	x	x
4125				x

All dimensions in **mm/inch**; only metric values are valid.

Sheet piles

Z profiles

	AZ 12	AZ 13	AZ 14	AZ 17	AZ 18	AZ 19	AZ 25	AZ 26	AZ 28	AZ 34	AZ 36	AZ 38	PZC 18	PZ 22
4080				X	X	X	X	X	X	X	X	X	X	X
4125	X	X	X	X	X	X	X	X	X	X	X	X		

U profiles

	PU 18	PU 22*	PU 25*	PU 32*	LS3*	L4S	L606N	L605*	
4080	X	X	X	X	X	X	X	X	* With different jaws.

Other profiles on request.